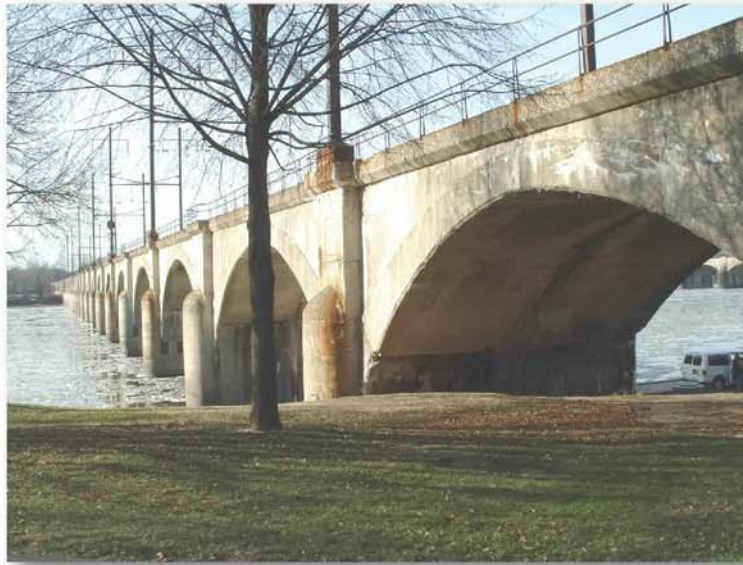


Electrical Resistivity Side Scanning Using the AGI SuperSting Resistivity Meter



Location of Field Test

Inactive Railroad Bridge Over the Susquehanna River, Harrisburg, Pennsylvania

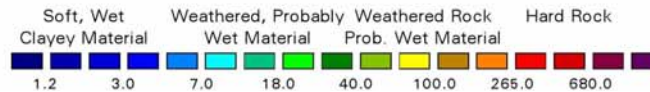
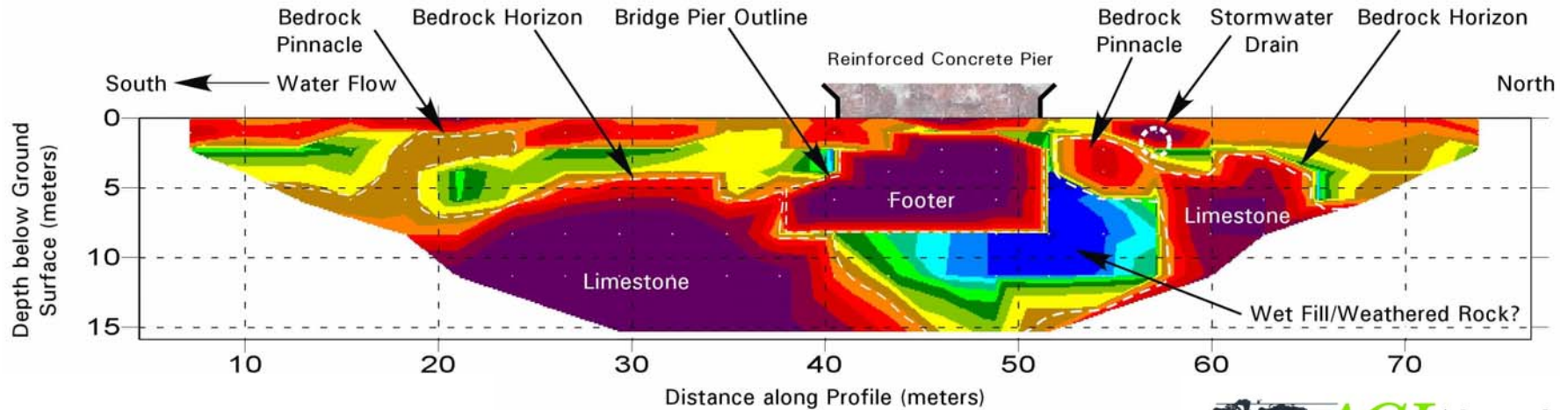


A 28-electrode AGI SuperSting Array with a 3-meter electrode spacing was oriented parallel to the bridge pier and water flow and approximately 2 meters from the pier. Modeling results indicate that adjacent subsurface structures can be mapped using electrical resistivity to image the size, depth and orientation of the target structure and surrounding earth materials.



Note that the bridge pier is not detected until the depth of sensing has approximately equaled the distance that the array was positioned from the structure. This is consistent with theoretical models.

Resistivity/Depth Cross-Section

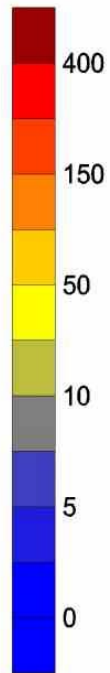
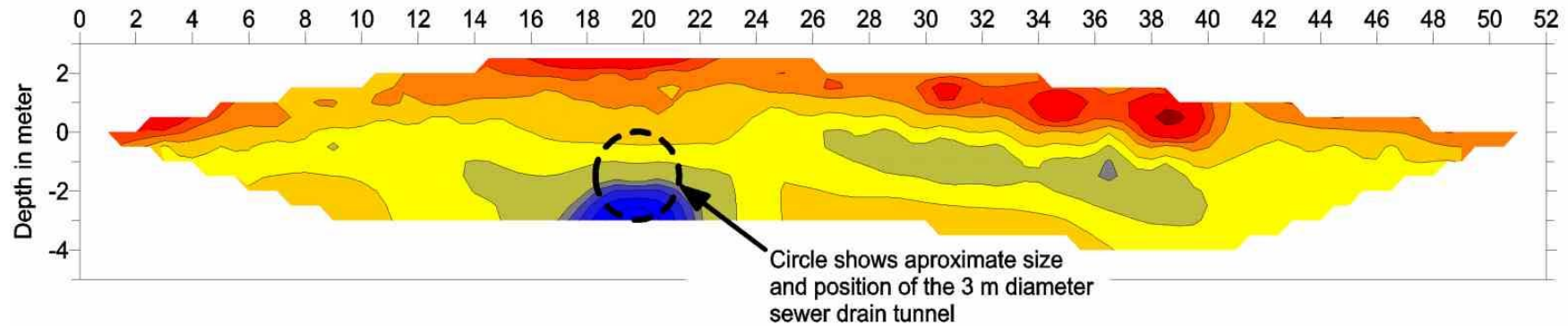


Courtesy of



AGI Advanced Geosciences, Inc.
 12700 Volente Rd Building A, Austin, TX 78726
 Tel: +1 (512) 335-3338
 Fax: +1 (512) 258-9958
 E-mail: sales@agiusa.com
 Website: <http://www.agiusa.com>

Detection of a Sewer Pipe



Ohmmeter



Objective: The objective was to detect a buried sewer pipe of 3 meter diameter. The pipe appears conductive most likely because of steel reinforcement in the concrete pipe and possibly also because of the content of the pipe

Survey date: September 18, 1998

Survey site: Le Bourget, France

Method: Dipole-dipole electrode array

Instrument: Sting/Swift, 27 electrodes at 2 meter spacing

Processing: Inversion and topographic correction using the Res2Dinv software

Units: Meter and Ohmmeter

Courtesy of LRPC, Le Bourget, France

 **AGI** *Advanced Geosciences, Inc.*

Tel: +1 (512) 335-3338

Fax: +1 (512) 258-9958

E-mail sales@agiusa.com

Web site <http://www.agiusa.com>

