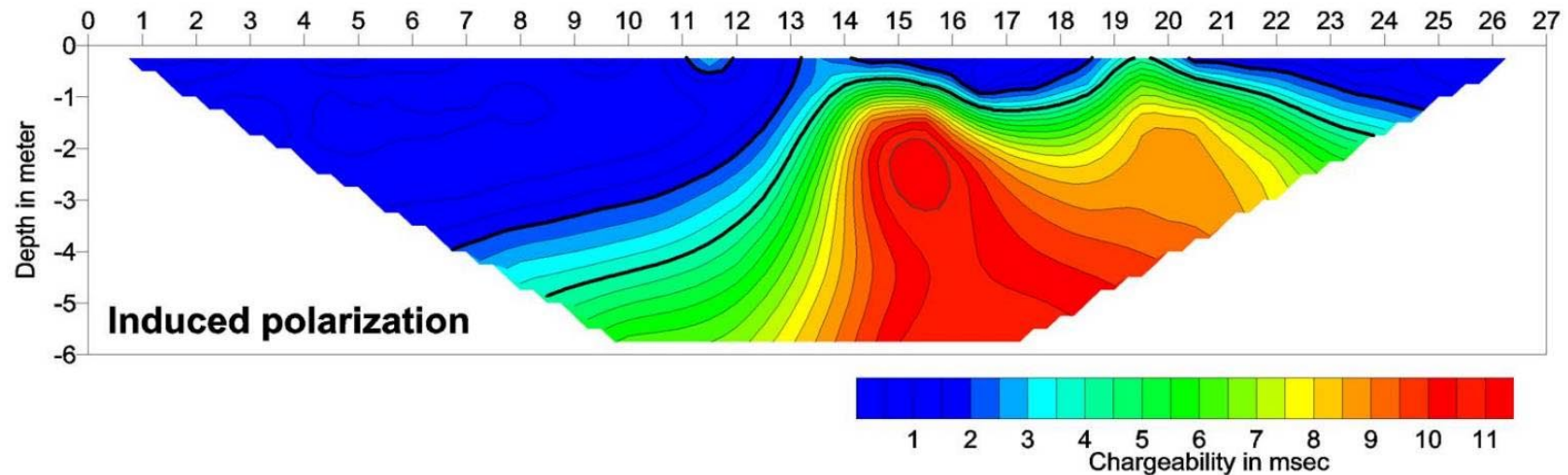
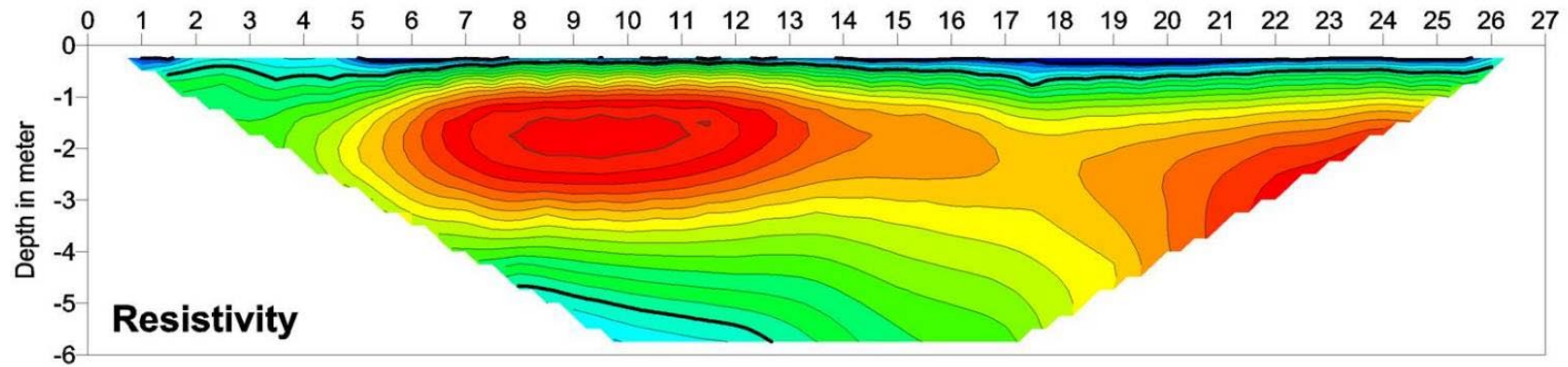


Resistivity and Induced Polarization Survey



Objective: To investigate a karstic limestone area using resistivity and induced polarization
Survey date: October 21, 1999
Survey site: Austin, Texas
Electrode array: Schlumberger
Instrument: Sting/Swift, 28 stainless steel electrodes at 1 meter spacing
Units: Meter, Ohmmeter and msec

 **AGI** *Advanced Geosciences, Inc.*

Tel: +1 (512) 335-3338
Fax: +1 (512) 258-9958
E-mail sales@agiusa.com
Web site <http://www.agiusa.com>